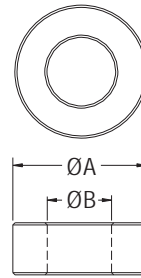
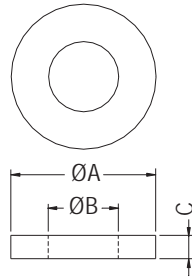
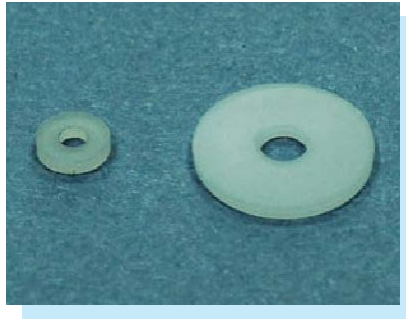
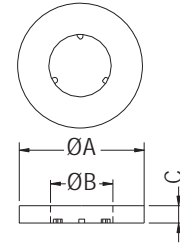


# WASHER

- ◆ MATERIAL: NYLON 66/NYLON 6(UL)/PBT (UL)/PP(UL)/POM(UL)
- ◆ COLOR: NATURAL/BLACK
- ◆ UNIT: mm



FOR WS6-31-2, WS063614



FOR WS3.25-0.9

PART NO	A	B	C
WS3.5-1810	3.5	1.8	1.0
WS3-2-1	3.7	2.2	1.0
WS2.2-12	3.7	2.2	1.2
WS2.5-0.5S	4.0	2.5	0.5
WS2.6-2	4.0	2.6	2.0
WS4-3.1-1	4.0	3.1	1.0
WS4-3-12	4.1	3.1	1.2
WS42-19-05	4.2	1.9	0.5
WS45-2-08	4.5	2.0	0.8
WS2.1-0.8	4.5	2.1	0.8
WS4.5-2.1-09	4.5	2.1	0.9
WS4.5-2.1-1.1	4.5	2.1	1.1
WS4.5-2.1-1.15	4.5	2.1	1.1
WS4.5-2.1-1.2	4.5	2.1	1.2
WS4.5-2.1-1.3	4.5	2.1	1.3
WS452117	4.5	2.1	1.7
WS2.5-0.5	4.5	2.5	0.5
WS-4529	4.5	2.9	1.2
WS4.9-3715	4.9	3.7	1.5
WS2.1-2	5.0	2.1	2.0
WS5-2.1-1	5.0	2.1	1.0
WS2.5-10	5.0	2.5	1.1
WS2.5-13	5.0	2.5	1.3
WS5-3-2.5	5.0	3.0	2.5
WS5-3.1-1	5.0	3.1	1.0
WS3.1-1.8	5.0	3.1	1.8
WS53205	5.0	3.2	0.5
WS5-2-0.5	5.5	2.3	0.5
WS3.2-2.8	5.5	3.2	2.8
WS3-5-1.5	5.6	3.1	1.5
WS3.7-0.3	5.6	3.73	0.3
WS6-23-08	6.0	2.3	0.8
WS2-0.5	6.0	2.5	0.5
WS6-2.7-3	6.0	2.7	3.0
WS6-31-2	6.0	2.9	2.35
WS6-3008	6.0	3.0	0.8
WS3-1.5	6.0	3.1	1.5
WS6-31-05	6.0	3.1	0.5
WS3-2	6.0	3.1	2.0
WS3-3.4	6.0	3.1	3.4

PART NO	A	B	C
WS6-3.2-0.5	6.0	3.2	0.5
WS6-3.2-1	6.0	3.2	1.0
WS063214	6.0	3.2	1.4
WS063614	6.0	3.6	1.4
WS6-3.8-1	6.0	3.8	1.0
WS6-38-15	6.0	3.8	1.5
WS-6451N	6.0	4.5	1.0
WS6.1-1.2	6.1	3.7	1.2
WS63-42-15	6.3	4.2	1.55
WS6352125	6.35	2.3	2.5
WS63530512	6.35	3.05	1.27
WS6.3-3.1-1.5	6.35	3.18	1.58
WS6.5-3.1-20	6.5	3.1	2.0
WS3.25-0.9	6.5	3.25	0.9
WS3.8-0.5	6.5	3.8	0.5
WS4-1.6	6.5	4.0	1.65
WS4-2.2	6.5	4.0	2.2
WS4-2.5	6.5	4.0	2.5
WS4-1	6.8	4.2	1.0
WS2.2-0.5	7.0	2.2	0.5
WS3-1	7.0	3.0	1.0
WS7-3-0.8	7.0	3.0	0.8
★ WS7-3.1-0.5N	7.0	3.1	0.5
WS7-3.3-2	7.0	3.3	2.0
WS7-3.6-3.2	7.0	3.6	3.2
WS4.3-2.3	7.0	4.3	2.3
WS4.6-0.6	7.0	4.6	0.6
WS4.7-0.8	7.5	4.7	0.8
WS7-5-1.6	7.0	5.0	1.6
WS3.7-0.5	7.1	3.7	0.5
WS71316	7.11	3.05	1.57
WS7.1-55158	7.13	5.53	1.58
WS3.5-0.5	7.5	3.5	0.5
WS-7543	7.5	4.3	0.65
WS8-2-2	8.0	2.0	2.0
WS3-5	8.0	3.1	0.5
WS3-8	8.0	3.1	0.8
WS3-10	8.0	3.1	1.0
WS3-15	8.0	3.1	1.5
WS3-20	8.0	3.1	2.0

