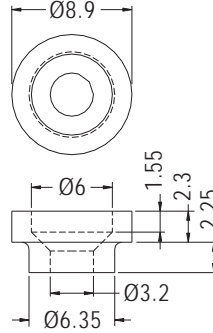


WASHER



- ◆ MATERIAL:PC (UL)
- ◆ FLAME CLASS:94V-2/94V-0
- ◆ COLOR:NATURAL
- ◆ UNIT:mm

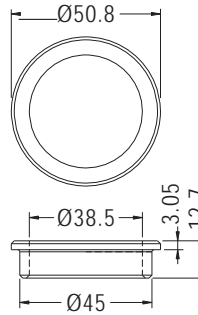


| PART NO | PACKAGE |
|---------|---------|
| WSF-3 | 2000 |

WASHERS



- ◆ MATERIAL:NYLON 66 (UL)
- ◆ FLAME CLASS:94V-2/94V-0
- ◆ COLOR:NATURAL/BLACK
- ◆ UNIT:mm

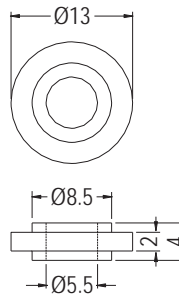


| PART NO | PACKAGE |
|---------|---------|
| TWC-14 | 1000 |

WASHERS

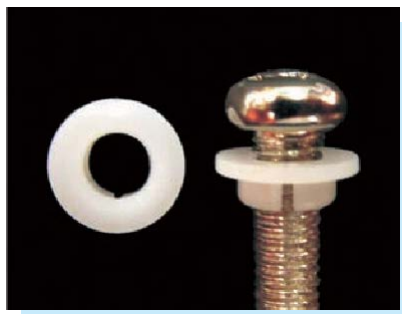


- ◆ MATERIAL:PC+ABS (UL)
- ◆ FLAME CLASS:94V-2/94V-0
- ◆ COLOR:NATURAL/BLACK
- ◆ UNIT:mm

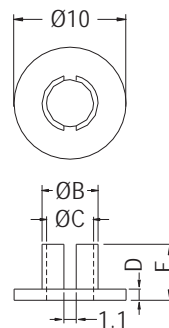


| PART NO | PACKAGE |
|---------|---------|
| TWC-4 | 2000 |

WASHERS

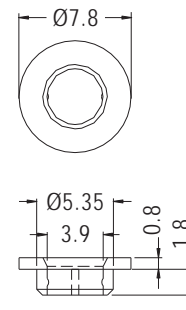


- ◆ MATERIAL:NYLON 66 (UL)
- ◆ FLAME CLASS:94V-2/94V-0
- ◆ COLOR:NATURAL/WHITE/BLACK
- ◆ UNIT:mm



| PART NO | B | C | D | E | PACKAGE |
|---------|-----|-----|-----|-----|---------|
| TWU-1 | 5.0 | 4.2 | 1.0 | 5.0 | 2000 |
| TWU-3 | 6.0 | 5.0 | 1.0 | 6.0 | |

- ◆ MATERIAL:POM(UL)
- ◆ FLAME CLASS:94HB



| PART NO | PACKAGE |
|---------|---------|
| TWU-2 | 2000 |

