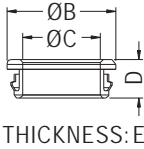
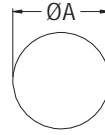
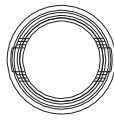


SNAP BUSHING

- ◆ MATERIAL: NYLON 66 (UL)
- ◆ FLAME CLASS: 94V-2/94V-0
- ◆ COLOR: NATURAL/BLACK
- ◆ UNIT: mm



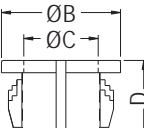
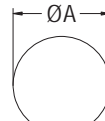
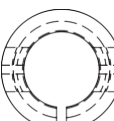
MOUNTING HOLE



PART NO	A	B	C	D	E	PACKAGE
NB-1215	15.8	17.8	12.7	6.3	0.8~1.6	1000

SNAP BUSHING

- ◆ MATERIAL: NYLON 66 (UL)
- ◆ FLAME CLASS: 94V-2/94V-0
- ◆ COLOR: BLACK
- ◆ UNIT: mm



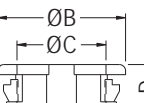
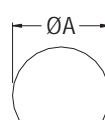
MOUNTING HOLE



PART NO	A	B	C	D	E	PACKAGE
0609C	9.5	11.9	7.3	6.5	0.6~1.6	1000
0813C	12.7	15.0	9.7	9.8	0.8~3.3	
1216C	15.9	18.4	12.8	10.4		
1419C	19.0	20.7	15.1	10.4		

SNAP BUSHING

- ◆ MATERIAL: NYLON 66 (UL)
- ◆ FLAME CLASS: 94V-2/94V-0
- ◆ COLOR: BLACK
- ◆ UNIT: mm



MOUNTING HOLE



PART NO	A	B	C	D	E	PACKAGE
NB-09	9.5	12.4	7.6	6.0	0.8~1.2	1000
NB-12	12.7	16.8	10.8	7.3	0.8~1.2	
NB-16	15.9	20.3	14.1	7.3	0.8~1.0	500
NB-19	19.0	22.5	16.5	7.3	0.8~1.0	
NB-22	22.0	26.0	20.0	7.3	0.8~1.0	
NB-25	25.4	28.6	22.0	7.9	0.8~1.6	

