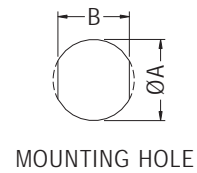
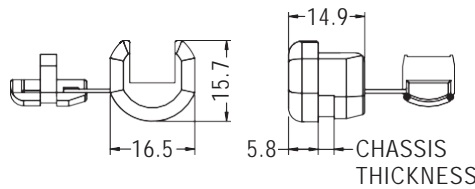


## SWITCH POWER BUSHING

- ◆ MATERIAL: NYLON 66 (UL)
- ◆ FLAME CLASS: 94V-2/94V-0
- ◆ COLOR: BLACK
- ◆ UNIT: mm



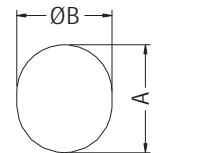
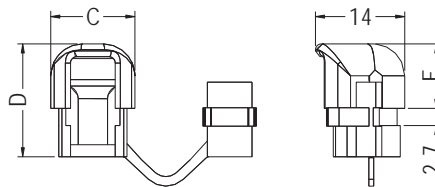
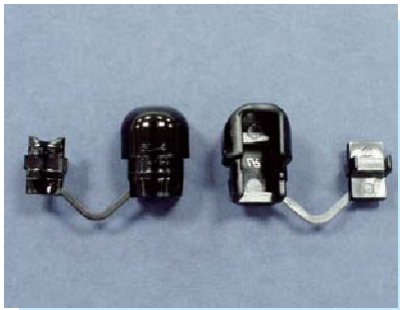
  
E127489

PARTNO	WILL FIT THESE CABLE			CHASSIS DIMENSION		CHASSIS THICKNESS	PACKAGE
	UL TYPE DESIGNATION	AWG CONDUCTORS	SIZE	A	B		
SB6P4-4	SPT-2	18/3	3.0X7.6	15.9	14.0	2.0-2.5	500
		16/3	4.1X10.4				

## STRAIN RELIEF BUSHING

- ◆ MATERIAL: NYLON 66 (UL)
- ◆ FLAME CLASS: 94V-294V-0
- ◆ COLOR: BLACK
- ◆ UNIT: mm

  
E127489



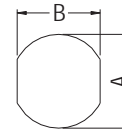
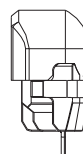
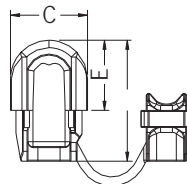
MOUNTING HOLE THICKNESS 2.5 MAX.

PARTNO	WILL FIT THESE CABLE		CHASSIS DIMENSION		CHASSIS THICKNESS	DIMENSION			PACKAGE
	UL TYPE DESIGNATION	SIZE	A	B	F	C	D	E	
SB4L-4	SPT-2	3X6.6	12.7	11.2	2.5	13.2	17.7	10.1	500
SB5L-4	SVT	6.0							

## STRAIN RELIEF BUSHING

- ◆ MATERIAL: NYLON 66 (UL)
- ◆ FLAME CLASS: 94V-2/94V-0
- ◆ COLOR: BLACK
- ◆ UNIT: mm

  
E127489



MOUNTING HOLE

ROUND TYPE

PARTNO	WILL FIT THESE CABLE			CHASSIS DIMENSION		CHASSIS THICKNESS MAX.	DIMENSION			SECTION SHAPE	PACKAGE
	UL TYPE DESIGNATION	AWG CONDUCTORS	SIZE	A	B		C	D	E		
SB6L-6	SJT	18/3C	Ø7.4~8.2	15.9	14.0	3.2	15.4	24.5	14.2	ROUND TYPE	100
SB7L-2	SJT	14/3C	Ø9.2~10.5	19.0	16.5	3.2	19.5	27.8	16.3		