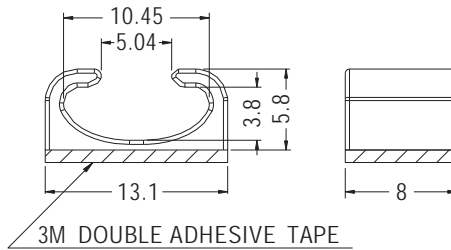
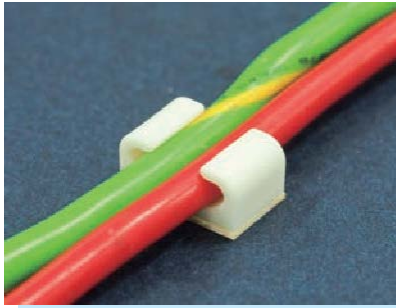


WIRE MOUNT

- ◆ MATERIAL: NYLON 66 (UL)
- ◆ FLAME CLASS: 94V-2/94V-0
- ◆ COLOR: NATURAL/BLACK
- ◆ UNIT: mm

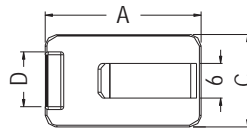
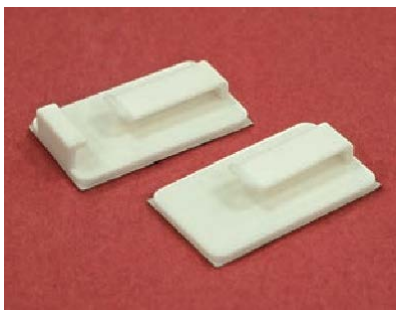


3M DOUBLE ADHESIVE TAPE

PART NO	PACKAGE
WLLT-3	1000

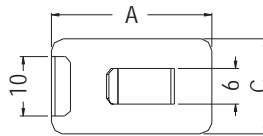
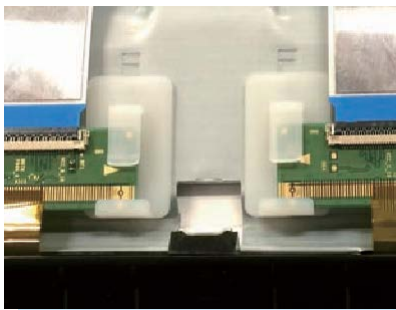
WIRE MOUNT

- ◆ MATERIAL: NYLON 66 (UL)
- ◆ FLAME CLASS: 94V-2/94V-0
- ◆ COLOR: NATURAL/BLACK
- ◆ UNIT: mm



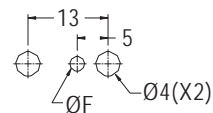
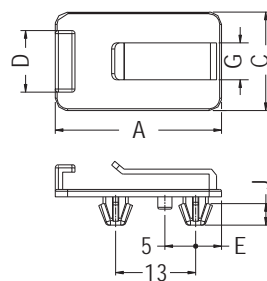
DOUBLE ADHESIVE TAPE

PART NO	A	C	D	PACKAGE
MIB-9	27.0	16.0	9.5	1000
MIB-10	27.0	16.0		
★ MIB-17	31.9	16.0	10.0	



DOUBLE ADHESIVE TAPE

PART NO	A	C	D	PACKAGE
MIB-11	27.0	16.0	10.0	1000



MOUNTING HOLES
THICKNESS: T

PART NO	A	C	D	E	F	G	J	T	PACKAGE
MIB-1	27.0	16.0	10.0	4.2	2.4	6.0	3.5	0.6~0.8	1000
MIB-3	27.0	16.0		4.2	2.4	6.0	3.5	0.6~0.8	
MIB-4	31.9	16.0	10.0	9.1	2.1	6.0	3.5	0.5~0.8	
MIB-5	46.2	16.0	10.0	23.4	2.1	6.0	3.5	0.5~0.8	500
MIB-7	22.5	16.0	10.0	4.2	2.1	6.0	3.5	0.5	1000
MIB-8	28.5	16.0	10.0	4.2	2.4	6.0	3.5	0.5	
MIB-12	31.9	16.0	10.0	9.1	2.1	6.0	3.5	0.5~0.8	
★ MIB-13	31.9	16.0	12.0	9.1	2.1	12.0	3.5	0.5~0.8	
★ MIB-14	27.0	16.0		4.2	2.4	6.0	3.5	0.6~0.8	

