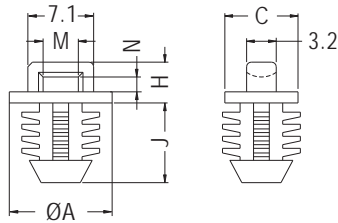


# CABLE TIE MOUNT

- ◆ MATERIAL: NYLON 66 (UL)
- ◆ FLAME CLASS: 94V-2/94V-0
- ◆ COLOR: NATURAL/BLACK
- ◆ UNIT: mm

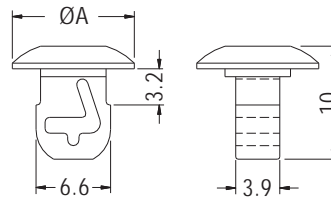
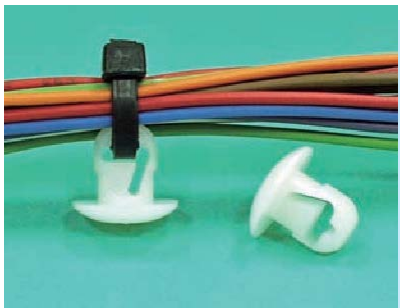


CHASSIS: ØG  
THICKNESS: T MIN.

PART NO	A	C	G	H	J	M	N	T	PACKAGE
CCMF-1	11.1	8.3	7.9	4.4	8.6	3.8	1.6	6.4	1000

# CABLE TIE MOUNT

- ◆ MATERIAL: NYLON 66 (UL)
- ◆ FLAME CLASS: 94V-2/94V-0
- ◆ COLOR: NATURAL/BLACK
- ◆ UNIT: mm

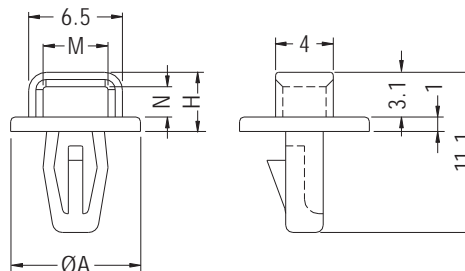


CHASSIS Ø6.4

PART NO	A	PACKAGE
CCM-1	10.8	1000

# CABLE TIE MOUNT

- ◆ MATERIAL: NYLON 66 (UL)
- ◆ FLAME CLASS: 94V-2/94V-0
- ◆ COLOR: NATURAL/BLACK
- ◆ UNIT: mm



CHASSIS: ØG  
THICKNESS: T

PART NO	A	G	H	M	N	T	PACKAGE
CCMT-2	9.0	4.0	4.1	4.5	2.1	1.6~2.0	1000

