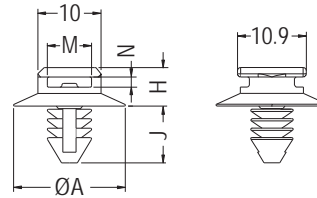


CABLE TIE MOUNT

- ◆ MATERIAL: NYLON 66 (UL)
- ◆ FLAME CLASS: 94V-2/94V-0
- ◆ COLOR: NATURAL/BLACK
- ◆ UNIT: mm

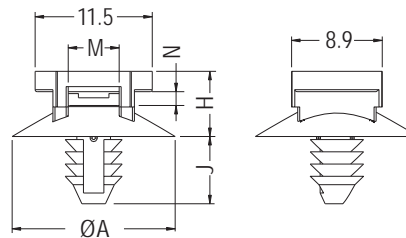


MOUNTING HOLE: ØG
 THICKNESS: T

PARTNO	A	G	H	J	M	N	T	PACKAGE
CCMF-2	17.7	6.0	6.1	9.0	7.0	1.6	0.8-9.0	1000

CABLE TIE MOUNT

- ◆ MATERIAL: NYLON 66 (UL)
- ◆ FLAME CLASS: 94V-2/94V-0
- ◆ COLOR: NATURAL/BLACK/GRAY
- ◆ UNIT: mm

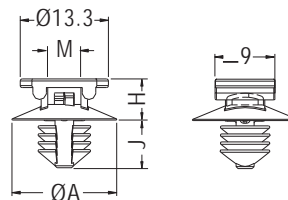


MOUNTING HOLE: ØG
 THICKNESS: T

PARTNO	A	G	H	J	M	N	T	PACKAGE
CCMF-3	16.0	4.5-5.0	6.4	6.6	5.0	1.15	0.8-7.0	1000

CABLE TIE MOUNT

- ◆ MATERIAL: NYLON 66 (UL)
- ◆ FLAME CLASS: 94V-2/94V-0
- ◆ COLOR: NATURAL/BLACK
- ◆ UNIT: mm



MOUNTING HOLE: ØG
 THICKNESS: T

PARTNO	A	G	H	J	M	T	PACKAGE
CCMF-5	15.8	6.5-7.0	6.3	7.2	5.0	0.8-3.0	1000