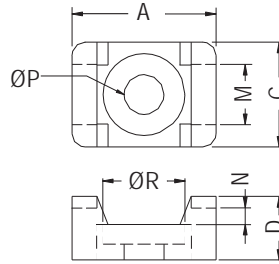


# CABLE TIE MOUNT

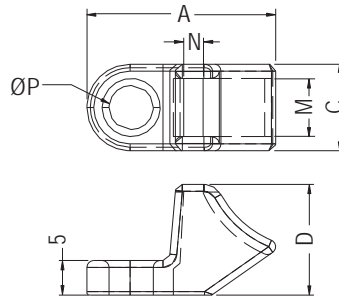
- ◆ MATERIAL: NYLON 66 (UL)
- ◆ FLAME CLASS: 94V-2/94V-0
- ◆ COLOR: NATURAL/BLACK
- ◆ UNIT: mm



PART NO	A	C	D	M	N	P	R	PACKAGE
TM-2S6	14.9	9.6	7.2	5.6	1.5	3.7	7.8	1000
TM-2S8	14.9	9.6	7.2	5.6	1.5	4.5	7.8	
TM-3S8	22.0	16.0	9.6	9.2	2.3	4.5	8.0	500
TM-3S10	22.0	16.0	9.6	9.2	2.3	4.8	9.6	
TM-3S25	22.0	16.0	9.6	9.2	2.3	6.4	12.7	

# CABLE TIE MOUNT

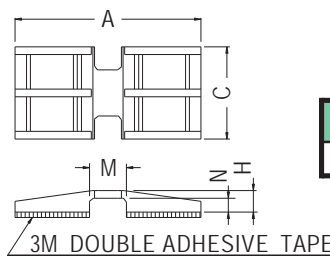
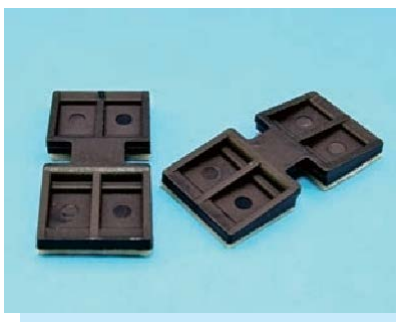
- ◆ MATERIAL: NYLON 66 (UL)
- ◆ FLAME CLASS: 94V-2/94V-0
- ◆ COLOR: NATURAL/BLACK
- ◆ UNIT: mm



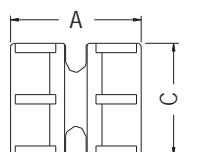
PART NO	A	C	D	M	N	P	PACKAGE
THMA-1	27.3	12.5	16.0	8.4	3.0	6.4	1000

# CABLE TIE MOUNT

- ◆ MATERIAL: NYLON 66 (UL)
- ◆ FLAME CLASS: 94V-2/94V-0
- ◆ COLOR: NATURAL/BLACK
- ◆ UNIT: mm



PART NO	A	C	H	M	N	PACKAGE
THU-1	24.2	12.0	2.8	4.8	1.8	1000



PART NO	A	C	H	M	N	PACKAGE
THU-2	14.0	12.0	3.0	3.6	2.0	1000

