

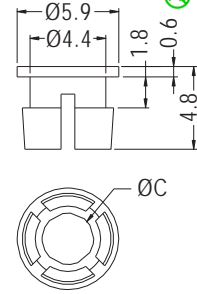
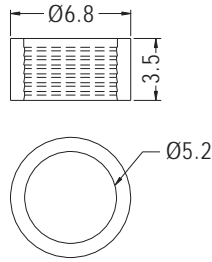
LED HOLDER



www.topttek-co.com



- ◆ MATERIAL: NYLON 66 (UL)
- ◆ FLAME CLASS: 94V-2/94V-0
- ◆ COLOR: BLACK
- ◆ UNIT: mm



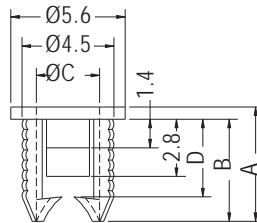
MOUNTING HOLE Ø4.5

PART NO	PACKAGE
LED3-1B	2000

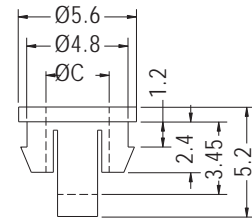
PART NO	C	PACKAGE
LED3-2	3.0	2000

LED HOLDER

- ◆ MATERIAL: NYLON 66 (UL)
- ◆ FLAME CLASS: 94V-2/94V-0
- ◆ COLOR: BLACK
- ◆ UNIT: mm



CHASSIS Ø4.5
THICKNESS 0.8-1.2



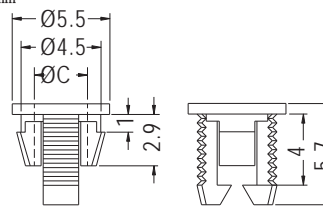
CHASSIS Ø5.0
THICKNESS 1.0-1.1

PART NO	A	B	C	D	PACKAGE
LED3-1	5.6	5.0	3.1	3.8	2000
LED3-8	4.6	4.0	3.1	2.8	

PART NO	C	PACKAGE
LED3-5	3.0	2000

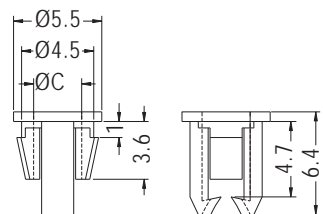
LED HOLDER

- ◆ MATERIAL: NYLON 66 (UL)
- ◆ FLAME CLASS: 94V-2/94V-0
- ◆ COLOR: BLACK
- ◆ UNIT: mm



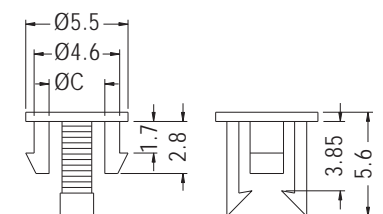
CHASSIS Ø4.5
THICKNESS 0.8

PART NO	C	PACKAGE
LED3-4	3.0	2000



CHASSIS Ø4.5
THICKNESS 0.8

PART NO	C	PACKAGE
LED3-6	3.0	2000



CHASSIS Ø4.5
THICKNESS 1.6

PART NO	C	PACKAGE
LED3-7	3.0	2000

