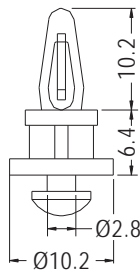


# SPACER SUPPORT

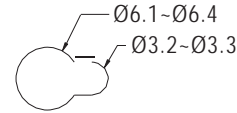
- ◆ MATERIAL: NYLON 66 (UL)
- ◆ FLAME CLASS: 94V-2/94V-0
- ◆ COLOR: NATURAL/BLACK
- ◆ UNIT: mm



P.C.B Ø4.0  
THICKNESS 1.6



THICKNESS 1.6

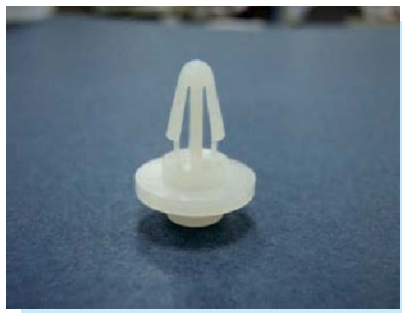


MOUNTING HOLE

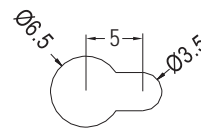
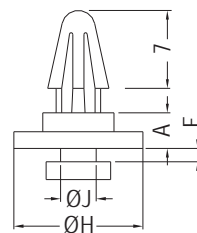
| PARTNO | PACKAGE |
|--------|---------|
| ACBR-6 | 1000    |

# SPACER SUPPORT

- ◆ MATERIAL: NYLON 66 (UL)
- ◆ FLAME CLASS: 94V-2/94V-0
- ◆ COLOR: NATURAL/BLACK
- ◆ UNIT: mm



P.C.B Ø4.0  
THICKNESS 1.6-2.0



MOUNTING HOLE

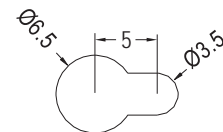
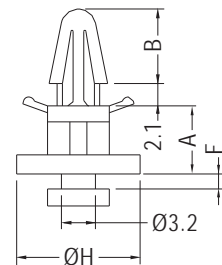
| PARTNO  | A   | F   | H    | J   | PACKAGE |
|---------|-----|-----|------|-----|---------|
| ACB-2.5 | 2.5 | 1.4 | 11.5 | 2.8 | 1000    |
| ACB-3   | 3.2 | 1.2 | 11.6 | 3.2 |         |

# SPACER SUPPORT

- ◆ MATERIAL: NYLON 66 (UL)
- ◆ FLAME CLASS: 94V-2/94V-0
- ◆ COLOR: NATURAL/BLACK
- ◆ UNIT: mm



P.C.B Ø4.0  
THICKNESS: E



MOUNTING HOLE

| PARTNO | A    | B   | E       | F   | H    | PACKAGE |
|--------|------|-----|---------|-----|------|---------|
| ACB-5  | 5.0  | 7.0 | 1.6     | 1.3 | 11.7 | 1000    |
| ACB-6  | 6.3  | 7.0 | 1.6     | 1.3 | 11.6 |         |
| ACB-8  | 8.0  | 7.0 | 1.6     | 1.4 | 11.6 |         |
| ACB-60 | 60.0 | 7.3 | 1.2-1.7 | 2.8 | 11.3 | 250     |
| ACB-68 | 68.0 | 7.3 | 1.6     | 1.3 | 11.3 |         |
| ACB-74 | 74.0 | 7.3 | 1.6     | 1.3 | 11.3 |         |