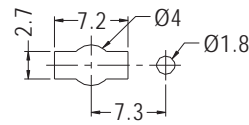
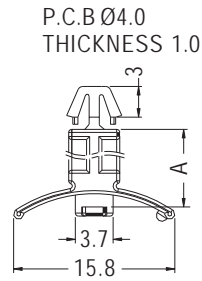


# SPACER SUPPORT

**NEW**

- ◆ MATERIAL: NYLON 66 (UL)
- ◆ FLAME CLASS: 94V-2/94V-0
- ◆ COLOR: NATURAL/BLACK
- ◆ UNIT: mm



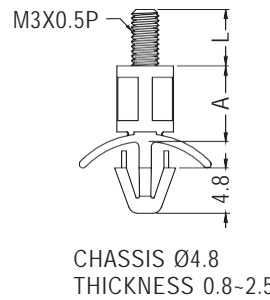
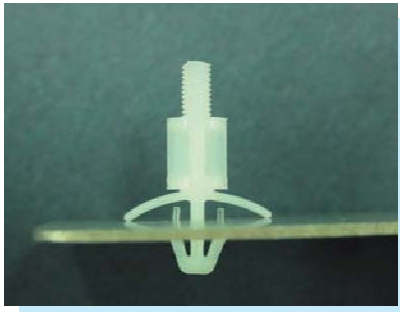
MOUNTING HOLE THICKNESS 0.6-1.0

PARTNO	A	PACKAGE
LCBA-5.6	5.6	1000
LCBA-7.6	7.6	

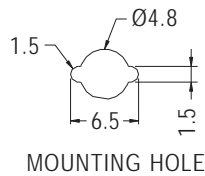
1

# SPACER SUPPORT

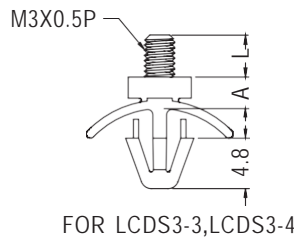
- ◆ MATERIAL: NYLON 66 (UL)
- ◆ FLAME CLASS: 94V-2/94V-0
- ◆ COLOR: NATURAL/BLACK
- ◆ UNIT: mm



CHASSIS Ø4.8 THICKNESS 0.8-2.5



MOUNTING HOLE

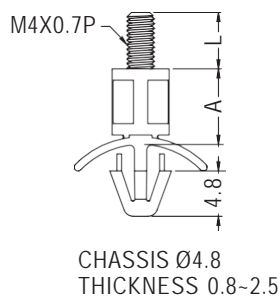


FOR LCDS3-3, LCDS3-4

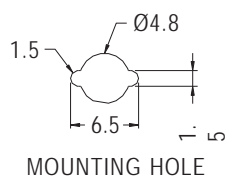
PARTNO	A	L	PACKAGE
LCDS3-3	3.0	4.0	1000
LCDS3-4	4.0	4.0	
LCDS3-5	5.0	4.0	
LCDS3-6	6.0	6.0	
LCDS3-7	7.0	6.0	
LCDS3-8	8.0	6.0	
LCDS3-9	9.0	6.0	
LCDS3-10	10.0	6.0	
LCDS3-11	11.0	6.0	
LCDS3-12	12.0	6.0	
LCDS3-13	13.0	6.0	
LCDS3-14	14.0	6.0	
LCDS3-15	15.0	6.0	

# SPACER SUPPORT

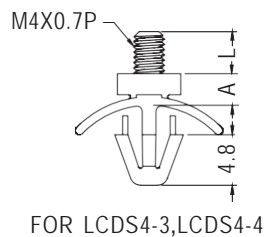
- ◆ MATERIAL: NYLON 66 (UL)
- ◆ FLAME CLASS: 94V-2/94V-0
- ◆ COLOR: NATURAL/BLACK
- ◆ UNIT: mm



CHASSIS Ø4.8 THICKNESS 0.8-2.5



MOUNTING HOLE



FOR LCDS4-3, LCDS4-4

PARTNO	A	L	PACKAGE
LCDS4-3	3.0	4.0	1000
LCDS4-4	4.0	4.0	
LCDS4-5	5.0	4.0	
LCDS4-6	6.0	6.0	
LCDS4-7	7.0	6.0	
LCDS4-8	8.0	6.0	
LCDS4-9	9.0	6.0	
LCDS4-10	10.0	6.0	
LCDS4-11	11.0	6.0	
LCDS4-12	12.0	6.0	
LCDS4-13	13.0	6.0	
LCDS4-14	14.0	6.0	
LCDS4-15	15.0	6.0	

